



# INSTRUCTION BULLETIN

No. 9045129  
Machine: S16  
Published: 03-2021  
Rev. 00

**NOTE: DO NOT DISCARD the Parts List from the Instruction Bulletin. Place the Parts List in the appropriate place in the machine manual for future reference. Retaining the Parts List will make it easier to reorder individual parts and will save the cost of ordering an entire kit.**

*NOTE: Numbers in parenthesis ( ) are reference numbers for parts listed in Bill of Materials.*

Installation instructions for **kit number 9045128**

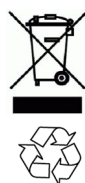
Kit installation must be performed by TennantTrue<sup>®</sup> service or an authorized service provider.

## SYNOPSIS:

This kit contains the parts needed to replace/install the front sand debris skirt on S16 sweepers.  
Please follow step-by-step instructions.

## SPECIAL TOOLS / CONSIDERATIONS: NONE

(Estimated time to complete: 10 minutes)



## PROTECT THE ENVIRONMENT

Please dispose of packaging materials, used machine components such as batteries and fluids in an environmentally safe way according to local waste disposal regulations.

Always remember to recycle.

## PREPARATION:

**FOR SAFETY: Before leaving or servicing machine, stop on level surface, turn off machine, and remove key.**

## INSTALLATION:

1. Release the main sweeping brush compartment access door and open the access door. (Fig. 1)



FIG. 1

2. Remove the knobs securing the idler arm assembly to the main sweep assembly. (Fig. 2)

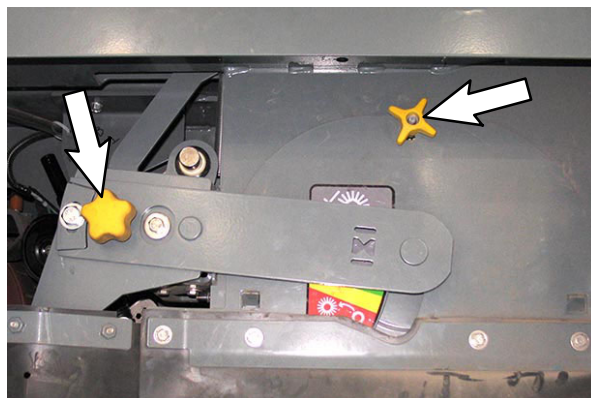


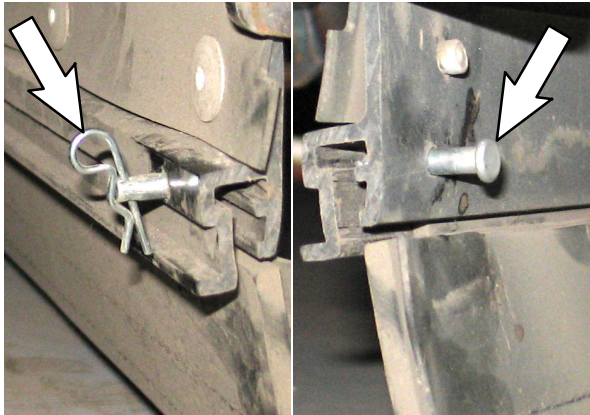
FIG. 2

3. Remove the idler arm assembly from the main brush assembly and remove the main sweep brush from the machine. (Fig. 3)



**FIG. 3**

4. Remove the cotter pin/clevis pin securing the large debris trap skirt to the sweep head. (Fig. 4)



**FIG. 4**

5. Pull the large debris trap skirt from the sweep head. (Fig. 5)



**FIG. 5**

6. Install the new large debris trap skirt onto the sweep head. (Fig. 5)
7. Reinstall the cotter pin/clevis pin to secure the large debris trap skirt to the sweep head. (Fig. 4)
8. Reinstall the main sweep brush and idler arm onto the machine. (Fig. 2/Fig. 3)
9. Close the main sweeping brush compartment access door. (Fig. 1)
10. Operate and test the machine. Use the large debris trap pedal while sweeping over debris to ensure debris is entering the sweep compartment behind the skirt and not being pushed in front of the skirt. Refer to the Operator Manual for additional information about operating the large debris trap pedal.

#### **Bill Of Materials For Skirt Kit, Front, Swp, CI - 9045128**

<b>Ref.</b>	<b>Tennant Part No.</b>	<b>Description</b>	<b>Qty.</b>
	1252213	Skirt Assy, Front [Sand]	1

TENNANT COMPANY  
P. O. Box 1452  
Minneapolis, MN 55440-1452